



CASTLE
ENGINEERING
INDUSTRIES



Company Profile

Castle Engineering Industries





Proudly We exported to
— this countries —

History:

Castle Engineering Industries has been established in Abu Rawash Industrial Zone, Giza, Egypt with a specialization in HVAC systems. With over two decades of professional management, the Castle team has utilized its extensive experience to provide exceptional operational expertise to the Egyptian market. Collaborative agreements with prominent contractors have facilitated Castle in supplying ductworks and accessories like flexible duct connectors, air outlets, dampers, sound attenuators, variable air volume systems, fan coils, garbage chutes, and cable tray systems for some of Egypt's most significant projects, all executed with precision. Over time, Castle has consistently met market demands and gained widespread recognition.

Castle production has been approved by IGC (Institute of Global Certification), as well as by the major International Consultants, since its method of manufacturing complies with the International Standards, such as SMACNA and DW144, with their latest versions, since its production line meets its Standards & Regulations.

Our Mission:

As the premier manufacturer of HVAC systems in Egypt, our mission is to consistently improve our production capacity to manage the most extensive ongoing and upcoming projects in the country. We are committed to providing outstanding services and promptly achieving the highest quality fabrication, exceeding customer expectations to ensure successful project completion within deadlines.

Our Vision:

Our distinct future vision is based on our teamwork goals and the target that we are focusing on to become the Number 1 Manufacturer within the few coming years, we intend to expand our products range that are all Made in Egypt with the most competitive quality, price and execution.

Values:

- 1- Integrity To have a work ethic, honesty and transparency.
- 2- Meet customers' requirements Offer the customer a product at the lowest cost and highest quality.
- 3- Responsibility and commitment to delivery dates agreed with customers.
Make sure you achieve the principle of equality and promote values of humility and respect for others.
- 4- Innovation Continuous work to develop and improve the quality of products and the adoption of international standards.
Work on inventing manufacturing methods that save time and effort on the human factor as it saves on the consumption of raw materials

Our Factory:

A mass area consisting of an Office Building, a Workshop occupying a Large Area, equipped with the most Advanced, Sophisticated and Computerized Machines, a large Warehouse for the storage of the fabricated products. The latest Technology of CNC machines utilized in Castle Factory, increases the Speed and the Capacity of Production, which makes Castle distinctive and superior.



[Scan here to see our factory video](#)



Products:

1-Duct Works:

- Galvanized Steel Ducts

Rectangular Ducts

Spiral Round Ducts

Longitudinal Seam Round Ducts

- Black Steel Welded Ducts

Rectangular Flanged Ducts

Round Flanged Ducts

- Stainless Steel Ducts

(Longitudinal Seam or Argon Welded)

Rectangular SS Ducts

Round SS Ducts

- Aluminum Jacketing



[Download Duct Works Catalogue](#)



2-Duct Accessories:

We offer a wide range of accessories include aluminum filters, corner elements, duct sealant, duct connectors, and more



TDF corner



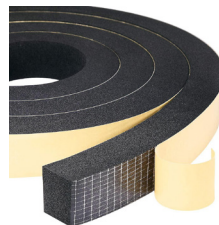
TDC corner and flange 40mm
and 35mm



G Clamp



Silicon Sealant



Duct Gasket



Self-drilling screw



Nuts and Washers



Threaded rods

3- Flexible Duct Connector:

- Silicon Coated Temperature range -30C° to $+250\text{C}^{\circ}$
- Silicon Coated Temperature range -30C° to $+180\text{C}^{\circ}$
- PVC Coated range -30C° to $+80\text{C}^{\circ}$
- All Dimensions are available.



[Download Flexible Duct Connector Catalogue](#)



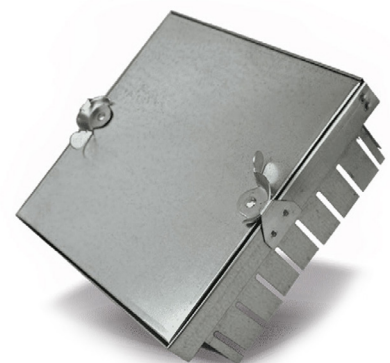
4- Round Flexible Duct:

- Insulated and non-insulated aluminum flexible ducts
- Available Diameters (4" to 18").
- Max. Air velocity 30 m/s.
- Standard Length: 10m



5 - Access Doors:

- The Insulated Access Door has been designed to create an airtight seal utilizing a moisture, oil and grease resistant neoprene gasket between the door to frame and the frame to duct.



6 - Humidification, Exhaust and transferring Duct for Textile Factories:

- Humidification rectangular duct

Main duct and fittings

Duct accessories

- Round exhaust and transferring Main duct and fittings

Duct accessories

- Floor air slots



7-Air Outlets

A) Square ceiling Diffuser

Features:

- Frame is made of high-quality extruded aluminum profile.
- Blades are made of aluminum sheet by one piece stamping.
- Core is removable to allow for better installation and maintenance.
- Opposed Blade Damper is optional.
- Color RAL9010, RAL9016, or Anodized.

Quick Selection Table:



[Download Air Outlets Catalogue](#)



Operating Range & Quick selection table for Square Diffuser (Model 1,2,3 & 4 Ways)

Size		Noise Level					
mm	Inch	Min.	<25	>25	<30	>30	40
150 x150	6" x6"	50	145	150	175	-	-
225 X 225	9" x 9"	110	280	285	330	-	-
300 X 300	12" X 12"	200	485	490	550	555	-
375 X 375	15" X 15"	310	615	620	715	720	954
450 X 450	18" X 18"	450	700	705	800	805	1246
525 X 525	21" X 21"	600	950	955	1070	1075	1526
600 X 600	24" X 24"	795	1090	1095	1390	1575	1992

Figures in CFM.

B) Round ceiling Diffuser

Features:

- The outer frame and blades are fabricated from aluminum sheet, shaped by a metal spinning lathe.
- Core is removable to allow for better installation and maintenance.
- Butterfly Damper is optional.
- Color RAL9010, RAL9016, or Anodized.

Quick Selection Table:

Standard Size		OD	OA	Air Volume (m3/h)
150	145	250	134	1.3
200	195	300	242	1.55
250	245	350	359	1.8
300	295	400	503	2.2
350	345	450	665	2.4



C) Grilles & Registers

Features:

- Made of high-quality extruded aluminum profile.
- Blades are movable on horizontal and vertical lines.
- Mounting screws or spring clips.
- Opposed Blade Damper optional.
- Color RAL9010, RAL9016.

Quick Selection Table:



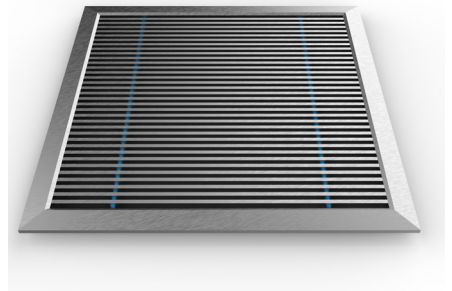
Nominal Size		CFM Range		Nominal Size		CFM Range	
Inch	mm			Inch	mm		
12" x 6"	300 X 150	190	460	12"x10"	300 X 250	315	725
16" x 6"	400 X 150	270	625	16"x10"	400 X 250	425	970
18" x 6"	450 X 150	300	650	18"x10"	450 X 250	480	1060
20" x 6"	500 X 150	315	725	20"x10"	500 X 250	540	1200
24" x 6"	600 X 150	400	900	24"x10"	600 X 250	610	1400
30" x 6"	750 X 150	450	1025	30"x10"	750 X 250	850	2050
36" x 6"	900 X 150	550	1250	36"x10"	900 X 250	1000	2200
40" x 6"	1000X150	610	1400	40"x10"	1000X 250	1090	2350
48" x 6"	1200X150	700	1600	48"x10"	1200X250	1200	2500
12" x 8"	300 X 200	325	725	12"x12"	300 X 300	390	850
16" x 8"	400 X 200	350	760	16"x12"	400 X 300	525	1160
18" x 8"	450 X 200	390	850	18"x12"	450 X 300	560	1250
20" x 8"	500 X 200	425	950	20"x12"	500 X 300	640	1440
24" x 8"	600 X 200	500	1100	24"x12"	600 X 300	675	1550
30" x 8"	750 X 200	610	1400	30"x12"	750 X 300	870	2000
36" x 8"	900 X 200	675	1550	36"x12"	900 X 300	1070	2350
40" x 8"	1000 X200	800	1900	40"x12"	1000 X300	1200	2500
48" x 8"	1200X 200	900	2150	48"x12"	1200 X300	1350	3100

- CFM Values are based on Noise Level ranging from 15-35 (dB).
- Tabulated data are for Double Deflection Grilles/Registers of Horizontal or Vertical Front Blades.

D) Linear Bar Grille

Features:

- Made of high quality extruded aluminum profile.
- Fixed blades in 15 one way, 15 two way or 45 degrees.
- Opposed Blade Damper optional.
- Color RAL9010, RAL9016, Anodized.



Quik selection Table:

WITH VERTICAL REAR BLADES				W/O REAR BLADES					
Standard Heights		Length mm	CFM Range		Standard Heights		Length mm	CFM Range	
mm	Inch				mm	Inch			
4"	100	1000	350	800	4"	100	1000	500	1100
6"	150		550	1250	6"	150		725	1650
8"	200		725	1700	8"	200		950	2100
10"	250		850	2000	10"	250		1250	2500
12"	300		1080	2300	12"	300		1450	3400
4"	100	1500	550	1250	4"	100	1500	700	1600
6"	150		800	1850	6"	150		1075	2350
8"	200		1080	2300	8"	200		1425	3150
10"	250		1300	2600	10"	250		1875	3750
12"	300		1600	3700	12"	300		2175	5100
4"	100	2000	750	1600	4"	100	2000	1000	2200
6"	150		1100	2500	6"	150		1450	3300
8"	200		1450	3400	8"	200		1900	4200
10"	250		1700	4000	10"	250		2500	5000
12"	300		2160	4600	12"	300		2900	6800

CFM Values Based on Noise Level Ranging From 15 to 35 (DB)

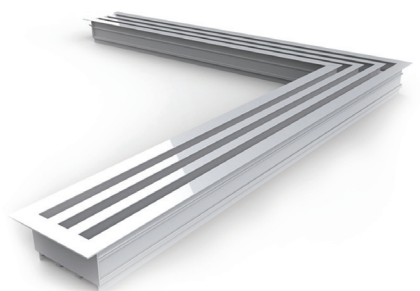
D) Linear Slot Diffuser

Features:

- Made of high quality extruded aluminum profile.
 - Suitable for rooms with ceiling heights from 2.5 to 4m.
 - Adjustable blades ensure vertical and horizontal air spread
 - Blades in black color Available in 1 to 6 slots configurations
- Removable core

- Color RAL9010, RAL9016

Quik selection Table:



Slot width 3/4" (20mm)						
No. of slot	1	2	3	4	5	6
A (mm)	50	90	130	170	210	250
B (mm)	40	80	120	160	200	240
C (mm)	76	116	156	196	236	276
CFM/FT	25-80	30-90	40-100	60-150	70-175	80-200

Slot width 1" (25mm)						
No. of slot	1	2	3	4	5	6
A (mm)	55	100	145	190	235	280
B (mm)	45	90	135	180	225	270
C (mm)	81	126	171	216	261	306
CFM/FT	25-80	40-100	50-125	70-175	80-200	90-250

F) Disc Valve

1) Return Disc Valve (RDV)

- Made of high-quality Al sheet by spinning lathe.
- Adjustable air volume.
- Color RAL9010, RAL9016.
- with sizes 4,6,8,10 inches.



2) Supply Disc Valve (SDV)

- Made of high-quality Al sheet by spinning lathe.
- Adjustable air volume.
- Color RAL9010, RAL9016.
- with sizes 4,6,8,10 inches.



G) JET DIFFUSER

- Made of high-quality aluminum sheet by spinning lathe.
- Adjustable rings with several elements according to your requirements.
- Long distance throw at high outlet velocities.
- Color RAL9010, RAL9016.
- With sizes 8,10,12,14 inches.



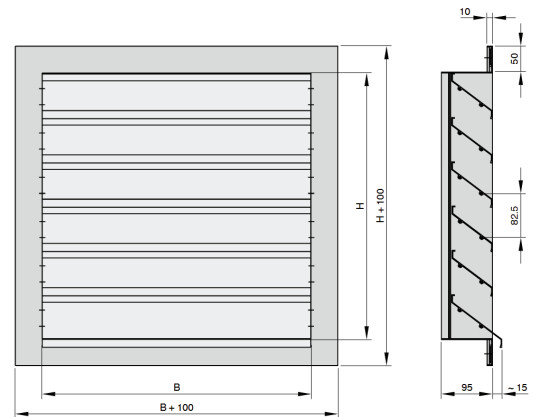
H) Ball Jet Diffuser

- Made of high-quality aluminum sheet.
- The ball can be oriented 360.
- Long distance throw at high outlet velocities.
- Color RAL9010, RAL9016.
- With sizes 6,8,10,12,14,16 inches.



I) Weather Resistant Louver

- Made of high-quality extruded aluminum profile.
- Two sizes of blades de sign.
- Wire mesh optional.
- Color RAL9010, RAL9016, Anodized.
- With standard sizes or customized to client order.



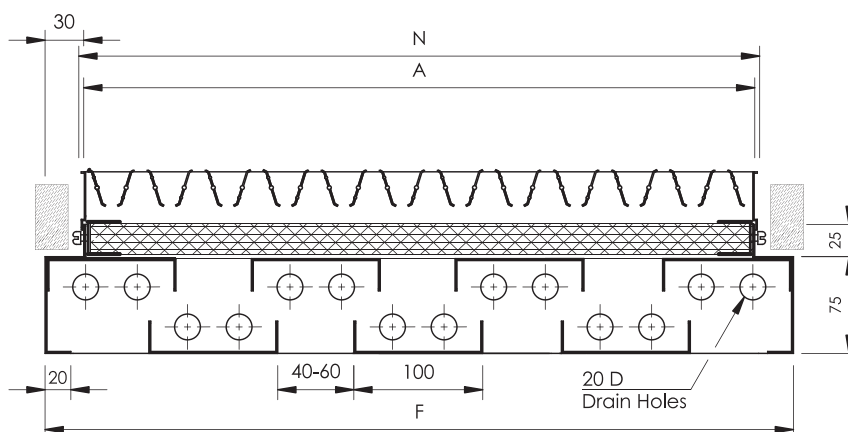
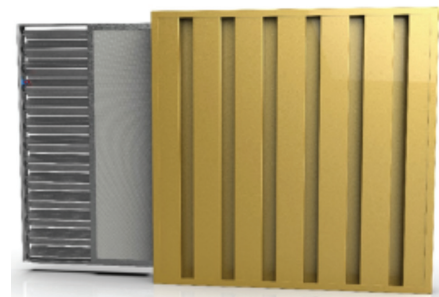
Performance Data:

WRL, width 200 – 1200 mm, volume flow rate at 2.5 m/s

Height	Width [mm]											
	200		400		600		800		1000		1200	
mm	l/s	m³/h	l/s	m³/h	l/s	m³/h	l/s	m³/h	l/s	m³/h	l/s	m³/h
165	40	144	80	288	120	432	160	576	200	720	240	864
330	125	450	245	882	370	1332	490	1764	615	2214	735	2646
495	205	738	410	1476	615	2214	820	2952	1025	3690	1230	4428
660	290	1044	575	2070	865	3114	1150	4140	1440	5184	1725	6210
825	370	1332	740	2664	1110	3996	1480	5328	1850	6660	2220	7992
990	455	1638	905	3258	1360	4896	1810	6516	2265	8154	2715	9774
1155	535	1926	1070	3852	1605	5778	2140	7704	2675	9630	3210	11556
1320	620	2232	1235	4446	1855	6678	2470	8892	3090	11124	3705	13338
1485	700	2520	1400	5040	2100	7560	2800	10080	3500	12600	4200	15120
1650	785	2826	1565	5634	2350	8460	3130	11268	3915	14094	4695	16902

J) Sand Trap Louver

- Made of high-quality extruded aluminum profile.
- Wire mesh and prefilter optional.
- Color RAL9010, RAL9016, Anodized.
- Size is customized as client order.



K) Door Grille

- Made of high-quality extruded aluminum profile.
- It's used for air transfer on doors or walls.
- Screw mounting as standard.
- Color RAL9010, RAL9016, Anodized.
- Size is customized as client order.



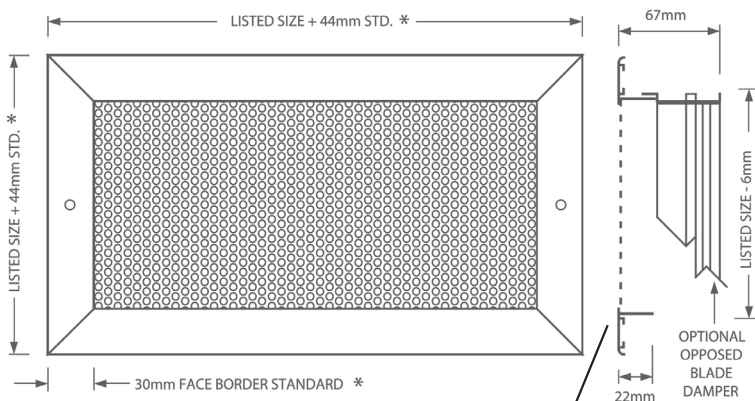
L) Shutter Grille

- Made of high-quality extruded aluminum profile.
- Intended for air extraction and automatic close of duct when the air equipment is switched off.
- Color RAL9010, RAL9016, Anodized.
- Size is customized as client order.



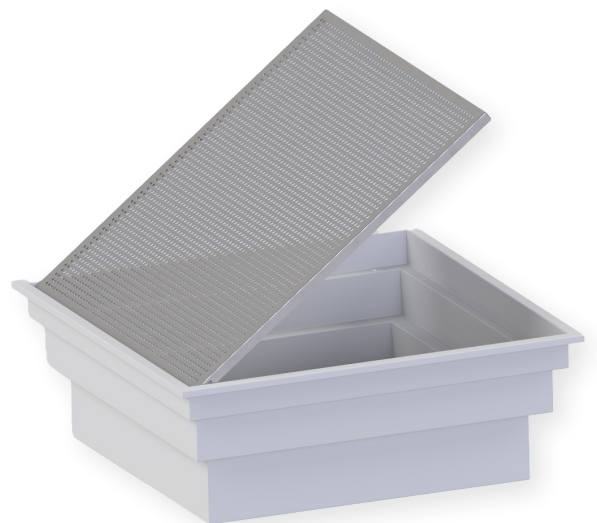
M) Perforated Grilles

- Frame Made of high-quality extruded aluminum profile.
- Stainless steel or aluminum perforated core.
- The perforated cores have 5mm diameter staggered holes on 6mm centers, providing 45% free area.
- Opposed blade dampers and plenum box with or without pre or Hepa filters is optional.
- Color RAL9010, RAL9016.
- Size is customized as client order.



40mm FACE BORDER STANDARD (ALNF)
 33mm FACE BORDER STANDARD (ALNFS)
 &(SSNFS)

Overlap in the ALNF Model

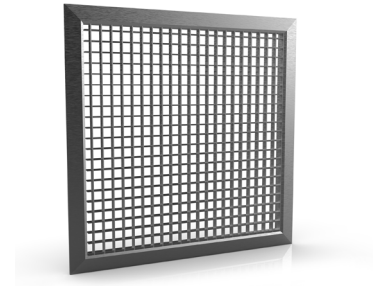


• We can supply the HEPA filter as client order

N) Linear Steel Grille

1-AT Single & double Deflection (ATSF)

- Frame & Blades: outside frame (GI or Stainless Steel, th1mm).
- blade (GI or Stainless Steel, th0.8mm)-rivet clips with pitch 20mm.



2- AR Linear Bar (ARSF)

- Frame & Blades: outside frame (GI or Stainless Steel, th1.5mm).
- blade (GI or Stainless Steel, th1mm)-rivet clips with pitch 25mm.



O) Flow Bar

- Made of high-quality extruded aluminum profile.
- Color RAL9010, RAL9016.
- Blades in black color.



A) Swirl Diffuser

- Frame Made of high-quality extruded aluminum profile.
- Stainless steel or galvanized perforated core.
- Opposed blade damper is optional.
- Color RAL9010, RAL9016.



Model	Outer Size (mm)	Number of Deflectors	A _{eff.} (m ²)	CFM Range	Throw @V _t =0.25m/s (m)	Pressure drop P (Pa)	Noise level (dBA)
SWD 16	595 x 595	16	0.022	90 - 320	<1 - 6.1	6 - 71	<20 - 54
SWD 24	595 x 595	24	0.032	90 - 320	<1 - 7.3	6 - 72	<20 - 51
SWD 48	595 x 595	48	0.043	90 - 320	<1 - 6.4	6 - 62	<20 - 54

8- Variable Air Volume

Variable Air Volume (VAV) refers to a HVAC system that adjusts the volume of conditioned air delivered to different areas of a building based on heating and cooling needs. It employs variable airflow rates to maintain comfortable temperatures efficiently, often controlled by dampers and fan speeds.



[Download Variable Air Volume Catalogue](#)



MODEL	UNIT SIZE (in)	INLET SIZE DIA (mm)	K Factor	Inlet Area ft ²	Airflow Range (CFM)		
					Min	Heating	Max
VAV 6	6	152	1.79	0.2	60	138	550
VAV 8	8	200	1.58	0.35	110	250	1000
VAV 10	10	250	1.7	0.55	170	400	1600
VAV 12	12	305	1.2	0.79	290	525	2100
VAV 14	14	350	1.48	1.07	352	750	3000
VAV 16	16	400	4.46	1.4	464	1000	4000
VAV 18	18	450	1.39	1.77	600	1250	5000
VAV 20	20	500	1.5	2.18	710	1500	6000
VAV 24	24	600	1.52	3.14	1020	1950	7850

9- Air Dampers

A) Volume control Damper

CASTLE offers a comprehensive range of Volume Control Dampers, available in several types and models, each crafted from high-quality materials to meet specific design and application requirements.



[Download Volume control Damper Catalogue](#)

Product	Model / Specification		Material		Blade Operation	Construction
			Frame	Blade		
VCD	VCD1	Single Skin	GI/SS	GI/SS	A/B	Normal
	VCD2	Double Skin	AL	AL	C	
	VCD3	Double Skin	AL	AL	C	Heavy Duty
	VCD4	Double Skin	AL	AL	A/B/C	
	VCD5	Double/ Single Skin	GI/SS	GI/SS	Round	Normal

Blade Operation Codes:

A: Parallel Blade

B: Opposed Blade

C: Gear Opposed Blade

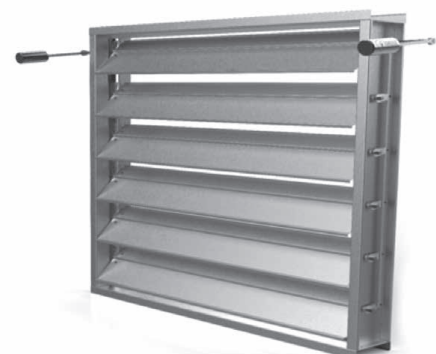


B) Inertia Damper:



[Download Inertia Damper Catalogue](#)

Item	Model	Material		Application
		Frame	Blade	
Pressure Relief Damper	CID-PR	GI AL SS	GI AL SS	Air Intake & Exhaust Stairwell pressurization In-duct ventilation
Counterbalance Damper	CID-CB	GI AL SS	GI AL SS	Fume exhaust Gravity hood intake and exhaust Room pressurization
Back Draft Damper	CID-BD	GI AL SS	GI AL SS	Blower outlets Branch duct isolation Emergency generator radiator outlets



C) Fire and Smoke Damper

I) Curtain Fire Damper

Features:

Test Ratings: Fire Rating: 1½ hrs.

Frame: 20 gauge (0.9 mm) up to 18 gauge (1.2 mm) thick galvanized steel.

Blades: Curtain type blade made of 22 gauge (0.8 mm) thick galvanized steel.

Fusible Link: 165°F.

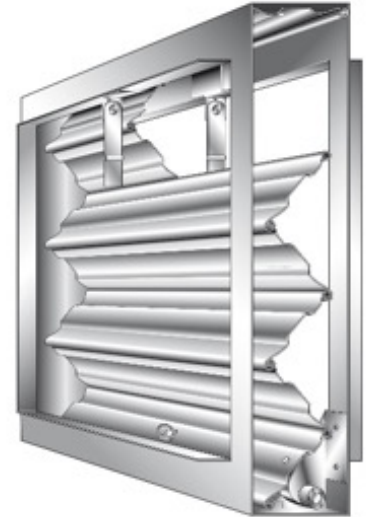
Blade Ramp: 16 gauge (1.5 mm) thick galvanized steel angle.

Spring: 0.3 mm thick by 19 mm wide, stainless steel constant force spring.

Mounting: Vertical / Horizontal



[Download Fire and Smoke Damper Catalogue](#)



II) Motorized Fire Damper

Features:

Frame: 16 gauge (1.4 mm - 1.7 mm) thick galvanized steel.

Blades: Parallel operated 3 'V' type blade made of 16 gauge (1.4 mm - 1.7 mm) thick galvanized steel.

Jamb Seals: Stainless steel.

Blade Shaft: ½" x ½" (12 mm) Galvanized square steel shaft.

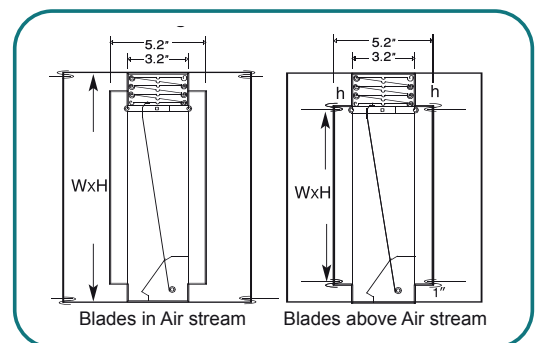
Thermal Response Device (TRD): 165°F.

Actuator: BELIMO/Honeywell (24V AC, 120V AC, 230V AC).

Sleeve: Minimum 0.9 mm, single section is field, or factory installed. Multiple section is factory installed. Sleeve thickness as per NFPA

Bushes: Fire resistant bronze bush.

Limit Switches: For BMS or Fire Alarm open / close indication



III) Motorized Smoke Damper

Features:

Frame: 16 gauge (1.4 mm - 1.7 mm) thick galvanized steel.

Blades: Opposite operated 3 'V' type blade made of 16 gauge (1.4 mm - 1.7 mm) thick galvanized steel.

Blade Seals: Silicon rubber blade seals.

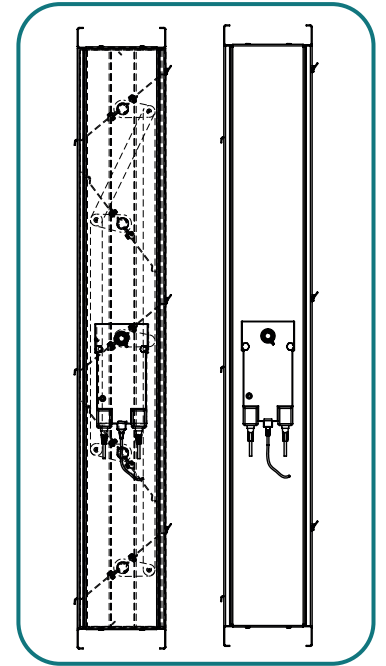
Jamb Seals: Stainless steel.

Blade Shaft: ½" x ½" (12 mm) Galvanized square steel shaft.

Actuator: Belimo/Honeywell (24V AC, 120V AC, 230V AC).

Sleeve: Minimum 0.9 mm, single section is field, or factory installed.

Multiple section is factory installed.



IV) Motorized Fire and Smoke Damper

Features:

Frame: 16 gauge (1.4 mm - 1.7 mm) thick galvanized steel.

Blades: Opposite operated 3 'V' type blade made of 16 gauge (1.4 mm - 1.7 mm) thick galvanized steel.

Blade Seals: Silicon rubber blade seals.

Jamb Seals: Stainless steel.

Fusible Link with Double acting mechanism: 165°F. **Blade Shaft:** ½" x ½" (12 mm) Galvanized steel square shaft.

Thermal Response Device (TRD): 165°F (74°C).

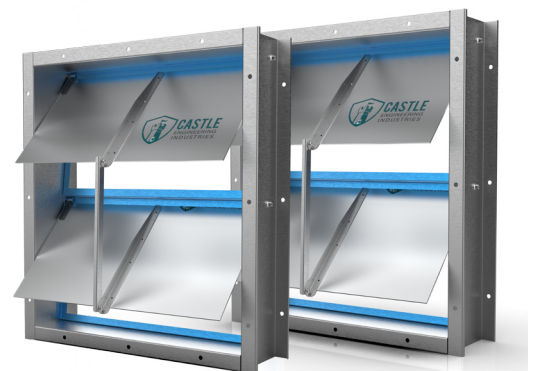
Actuator: Belimo/Honeywell (24V AC, 120V AC, 230V AC).

Sleeve: Minimum 0.9 mm, single section is field or factory installed.



D) Explosion proof Back Draft Damper:

An Explosion-proof Back Draft Damper is a safety device installed in ductwork to prevent the backflow of air and potential propagation of explosions, minimizing risks in hazardous environments.

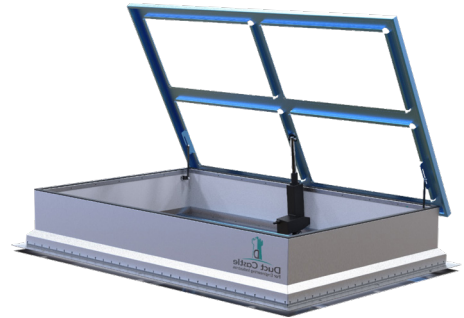


10- Smoke Vent

A smoke vent, also known as a smoke exhaust or smoke control system, is designed to remove smoke and heat from a building in the event of a fire. It typically consists of vents or openings strategically placed in the building's structure to allow smoke to escape, helping to improve visibility for occupants and aiding in their safe evacuation.



[Download Smoke Vent Catalogue](#)



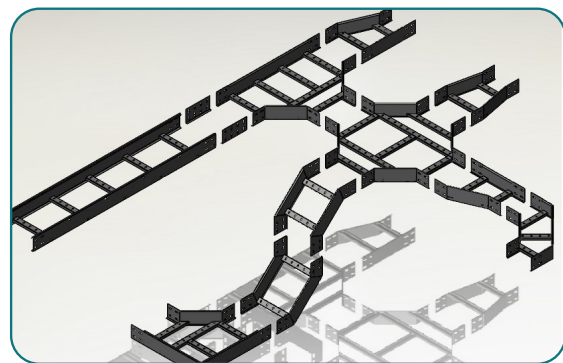
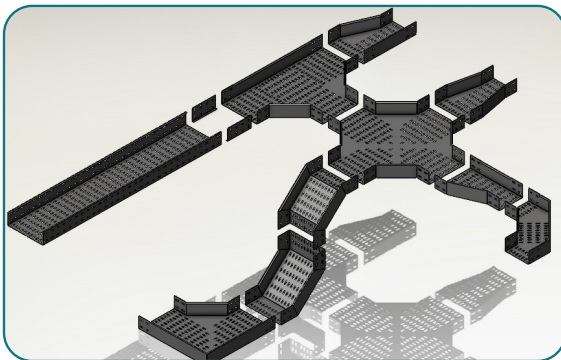
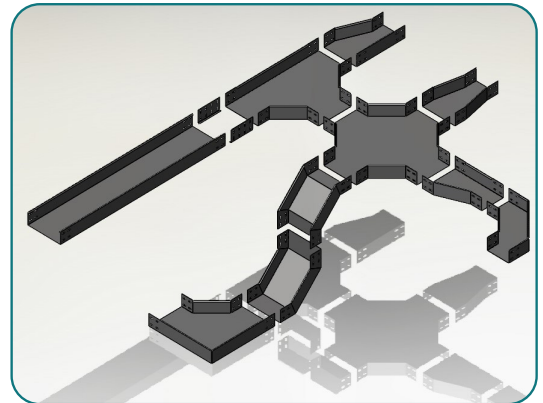
11- Cable Tray Systems:

Cable tray systems are support structures for organizing and protecting electrical cables, available in various types like Tray, Trunk, and Ladder.

- Cable trays are open-bottomed structures, offering easy access for cable laying and maintenance.
- Cable Trunk provides solid enclosure for cables, ensuring higher levels of protection.
- Ladder racks consist of rails with crossbars, facilitating overhead cable routing.



[Download Cable Tray Systems Catalogue](#)

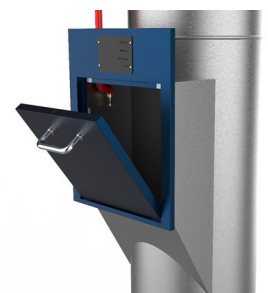


12- Garbage Chute System:

Garbage chute system is a long vertical space passing by each floor in a building. It includes a door on each floor where residents can dispose of their garbage into the chute. This door is usually contained in a small room on each floor. Garbage placed in the chute drops to a compactor or dumpster at the bottom.



[Download Garbage Chute System Catalogue](#)



SOME OF OUR REFERENCE PROJECTS:

Our company currently contributes to many national Mega projects implemented by the largest Egyptian contracting companies and supervised by major consulting offices in Egypt and the Arab world.

• Ministries Buildings at New Administration Capital:

- Ministry of Antiquities
- Ministry of Military Production
- Ministry of Education
- Ministry of Petroleum & Mineral Resources
- Ministry of Communications and Information Technology
- Ministry of Culture
- Ministry of Water Resources and Irrigation
- Ministry of Civil Aviation
- Ministry of Electricity and Renewable Energy



• National Training Academy – NTA:

National Training Academy in Zayed City.

Main Contractor: Arab Organization for Industrialization

Consultant: SUBBOUR



• Administrative Control Authority:

Administrative Control Authority in New Administration Capital.

Main Contractor: Concord for Engineering and Contracting

Consultant: ECG



• Arab Investment Bank:

Arab Investment Bank in New Administration Capital

Main Contractor: El Soadaa Group

Consultant: EHAF



• **Housing & Development:**

Housing & Development Bank in New Administration Capital

Main Contractor: ORASCOM

Consultant: ORASCOM



Housing & Development Bank
بنك التعمير والإسكان

• **MIVIDA:**

MIVIDA New Cairo

Main Contractor: ASGC

Consultant: RMC



• **Military Entity:**

Leaders Hospital (El Kada) Saff Officer Hospital

MEP Contractor: MiraTeck

Consultant: Allied Consultants Ltd



• **SAUDI MARKET (New Alameen):**

SAUDI MARKET Almassa Hotel

MEP Contractor: Al Fath

Consultant: KAM Consultant Engineer



• **Renewal of the National Cancer Institute:**

Renewal and Development of the National Cancer Institute on Kornish Al Nile, Cairo

MEP Contractor: EMCO

Consultant: Cairo University



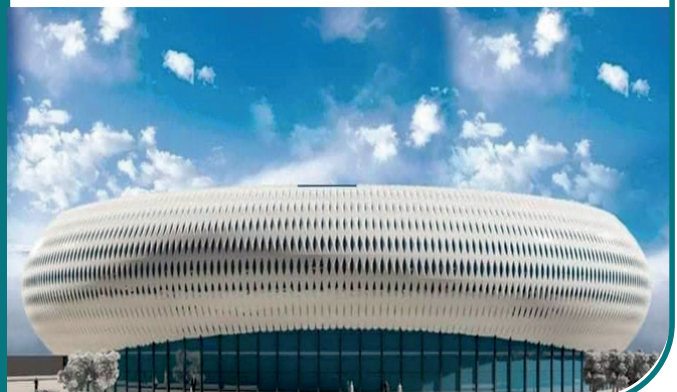
• **Egypt City for the Olympic Games Sports Halls:**

Main Contractors:

- RME (Rowad Modern Engineering)
- GAMA
- ORASCOM

Consultants:

- SUBBOUR
- MCG (ENGINEERING CONSULTANT GROUP)
- Cosmos Engineers and Consultants



• Madinaty:

Crafts Zone & B10 Administration Zone

Main Contractors: Alex Construction

Consultants: DAR AL-HANDASSA & Space



• Suiz Medical Complex:

Clinics building Hospital Building

Main Contractors: Al-Marasem International

Consultants: ECG



• Central Park (New Administration Capital) All administration Buildings:

Main Contractors: Al-Marasem International

Consultants: DAR AL-HANDASSA



• ZED Towers (EL-Sheikh Zayed):

Towers Ventilation

Main Contractors:

- Rowad RME (Rowad Modern Engineering)

- Redcon

- ORASCOM

Consultants: ECG



• New Alamein Towers:

Towers Ventilation and Conditioning

Main Contractors: SIAC

Consultants: ECG



• R5 - New Administration Capital:

Buildings Ventilation

Main Contractors:

- ASGC

- RME

- AL-MARSEM

- ORASCOM

Consultants: ECG



• **CBD New administration Capital:**

Towers Ventilation and Conditioning

Main Contractors:

- CSCES

Consultants: DAR AL-Handasa



• **LRT 10th Of Ramadan Railway:**

Stations Ventilation and Conditioning

Main Contractors:

- CREC & AVIC JV

Consultants: Khatib & Alami



• **Bashteel Railway Station:**

Ventilation and Conditioning

Main Contractors:

- Hassan Allam

Consultants: Diao Consulting



Project: High Speed Rail
Town Towers

CLIENT: Arab Contractor & Orascom
& EISweedy JV

Consultant: Shaker



Project: El-Dabaa Nuclear Power Plant

Contractor: Hassan Allam Constructure

Consultant: Rusatom



Project: Alamein Down Town Towers

Contractor: CSCEC

Consultant: Dar Al-Handasa



Project: City Culture

Contractor: Orascom

Consultant: ECG



Project: Latin District In New Alamein City

Contractor: Gama, Red Sea, Redcon

Consultant: ECG



Project: Greater Cairo Metro Line 3
Contractor: Arab Contractor
Consultant: National Authority For Tunnels & Systra



Project: Greater Cairo Metro Line 3
Contractor: Colas Rail
Consultant: National Authority For Tunnels & Systra



Project: Egypt Japanese University Of Science & Technology
Contractor: SIAC, Dar AL Alamia, Al-Shorouk Construction
Consultant:



Project: Mangrove Hotel
Contractor: Solera
Consultant: Shaker



Project: Badya University

Contractor: Emco Tech

Consultant: Julius Berger



Project: الاسكان الاستثماري

Contractor: السلام للمقاولات

Consultant: الهيئه الهندسيه للقوات المسلحه



Project: Military Academies,
New Adminstratve
Capital, Egypt

Contractor: SIAC ,Arab Contractor
Argynza, ICS , TCC
EL-Mohamadya

Consultant: Dar Al-Handasa



Project: Knowledge City - New
Capital

Contractor: RED SEA ,ICS
El Soadaa Group
Archirodon Construction

Consultant: ECG



Project: السوق التجاري والحضاري بالمنهل
بحي شرق مدينة نصر

Contractor: المؤسسه الهندسيه للأعمال المدنيه
(ايكو)

Consultant: مجموعه التصميمات المتكامله
(جايد)



SOME OF CASTLE SUCCESS PARTNERS:



Some of the Consultants Accredited by Them:



SYSTRA

SHAKER
CONSULTANCY GROUP

HOWEEDY
هويدي للاستشارات الهندسية



EL-RAEID
ELRAEID ENGINEERING CONSULTANTS
الرائد للاستشارات الهندسية



Gira Consultants
Gira Consultant Group
Engineering Consultant Office

Hydro هيدرون
Hydro. Envir.&infra str. Studies
للدراستات الهيدرولوجية و البيئية و البنية التحتية



بمراجعة الأستاذ الدكتور
ECG ENGINEERING CONSULTANTS GROUP S.A.

Luwa

COSMOS E
Engineers & Consultants

بيت الخبرة
تفليس للاستشارات الهندسية
EL AFIFI
HOUSE OF EXPERTISE

rmc
raafat miller consulting



PCE
PRECISION CONSULTING ENGINEERING
الدقة للاستشارات الهندسية



CASTLE
ENGINEERING
INDUSTRIES

Contact Us:

 28km, Alex-Cairo Desert Road, Abu Rawash Industrial Zone, Giza, Egypt.

 Domestic Sales:

sales@castle-ei.com

 +202 353 94394

 +20 1288012995

+20 1281217517

+20 1273637171

 Export Sales:

export@castle-ei.com

 +20 1281327541

Contact



Location

